

THIS DRAWING IS UNPUBLISHED. RELEASED FOR PUBLICATION
 © COPYRIGHT BY TYCO ELECTRONICS CORPORATION. ALL RIGHTS RESERVED.

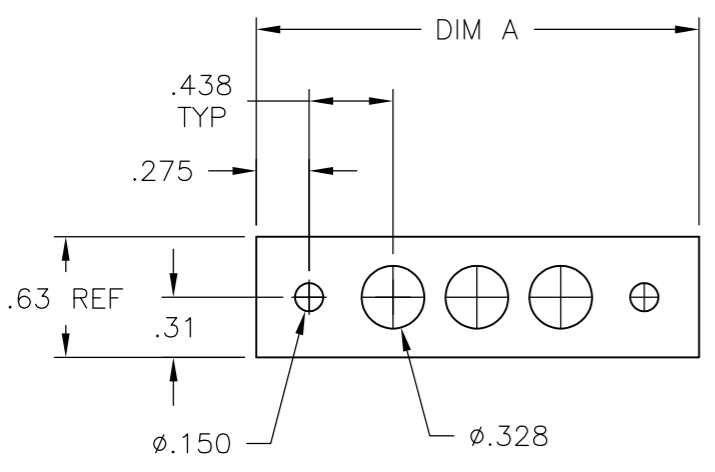
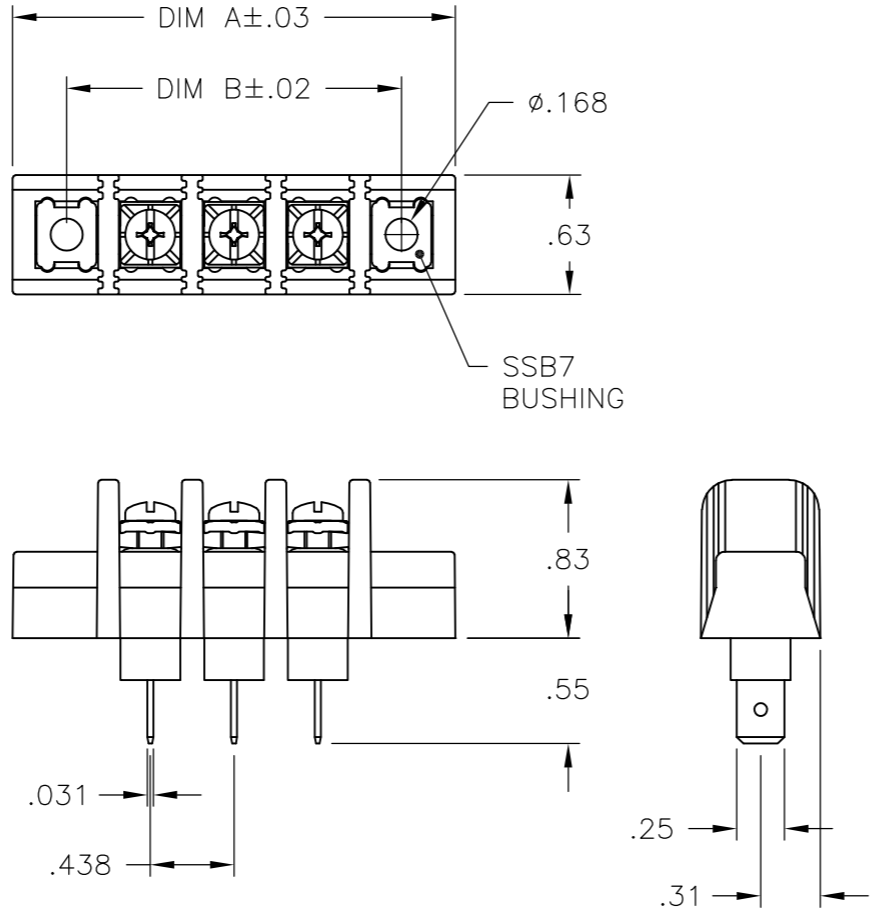
| LOC | DIST | REVISIONS | | | |
|-----|------|-------------|---------------------------|---------|--------|
| P | LTR | DESCRIPTION | DATE | DWN | APVD |
| | | A3 | REVISED PER ECO-08-015431 | 23JUN08 | HMR CR |

MATERIAL:
 HOUSING: THERMOPLASTIC, UL94V-2, BLACK.
 TERMINALS: BRASS, BRIGHT TIN PLATE.
 SCREWS: 6-32, STEEL, PLATED .0002 MIN ZINC
 W/ CLEAR CHROMATE COATING. UNLESS
 OTHERWISE SPECIFIED.

ELECTRICAL:
 MAXIMUM CURRENT: 20A.
 OPERATING VOLTAGE: 600V.
 WIRE RANGE: 12-22 AWG.

ENVIRONMENTAL:
 OPERATING TEMP.: -60°C TO +105°C

- 1 NICKEL PLATED BRASS SCREWS.
- 2 SEE DETAIL FOR SPECIAL MARKING.



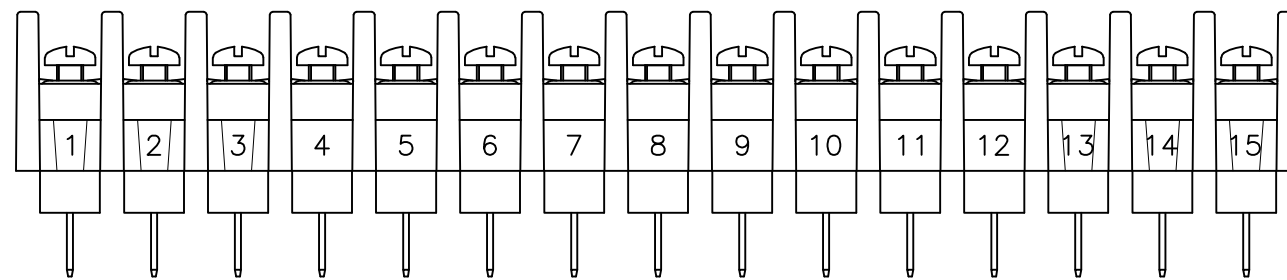
RECOMMENDED PANEL LAYOUT

| SSB7 BUSHING | DIM B | DIM A | NO. OF POS. | CATALOG NUMBER | PART NUMBER |
|--------------|-------|-------|-------------|----------------|-------------|
| YES | 9.187 | 9.750 | 20 | SSB7TG200502 | 2-1546969-0 |
| 1 YES | 8.750 | 9.312 | 19 | SSB7TG190509 | 2-1546969-9 |
| YES | 8.750 | 9.312 | 19 | SSB7TG190502 | 1-1546969-9 |
| YES | 8.312 | 8.875 | 18 | SSB7TG180502 | 1-1546969-8 |
| YES | 7.875 | 8.437 | 17 | SSB7TG170502 | 1-1546969-7 |
| YES | 7.437 | 8.000 | 16 | SSB7TG160502 | 1-1546969-6 |
| YES | 7.000 | 7.562 | 15 | SSB7TG150502 | 1-1546969-5 |
| YES | 6.562 | 7.125 | 14 | SSB7TG140502 | 1-1546969-4 |
| YES | 6.125 | 6.687 | 13 | SSB7TG130502 | 1-1546969-3 |
| YES | 5.687 | 6.250 | 12 | SSB7TG120502 | 1-1546969-2 |
| YES | 5.250 | 5.812 | 11 | SSB7TG110502 | 1-1546969-1 |
| 1 YES | 4.812 | 5.375 | 10 | SSB7TF100509 | 2-1546969-8 |
| NO | 4.812 | 5.375 | 10 | SSB7TF100502 | 2-1546969-6 |
| YES | 4.812 | 5.375 | 10 | SSB7TG100502 | 1-1546969-0 |
| YES | 4.375 | 4.937 | 9 | SSB7TG090502 | 1546969-9 |
| YES | 3.937 | 4.500 | 8 | SSB7TG080502 | 9-1437416-8 |
| YES | 3.500 | 4.062 | 7 | SSB7TG070502 | 1546969-7 |
| YES | 3.062 | 3.625 | 6 | SSB7TG060502 | 1546969-6 |
| NO | 2.625 | 3.187 | 5 | SSB7TF050502 | 4-796602-4 |
| YES | 2.625 | 3.187 | 5 | SSB7TG050502 | 1546969-5 |
| NO | 2.187 | 2.750 | 4 | SSB7TF040502 | 8-1437416-4 |
| 1 YES | 2.187 | 2.750 | 4 | SSB7TG040509 | 2-1546561-1 |
| YES | 2.187 | 2.750 | 4 | SSB7TG040502 | 3-796602-8 |
| NO | 1.750 | 2.312 | 3 | SSB7TF030502 | 8-1437416-3 |
| YES | 1.750 | 2.312 | 3 | SSB7TG030502 | 9-1437416-4 |
| 1 YES | 1.312 | 1.875 | 2 | SSB7TG020509 | 2-1546969-7 |
| YES | 1.312 | 1.875 | 2 | SSB7TG020502 | 9-1437416-2 |
| YES | .875 | 1.437 | 1 | SSB7TG010502 | 1546969-1 |

| | | | | |
|--|--|------------------------|---|-----------------|
| THIS DRAWING IS A CONTROLLED DOCUMENT. | | DWN S SCHL GEL 1/26/05 | Tyco Electronics Corporation Harrisburg, Pa 17105-3608 | |
| DIMENSIONS: INCHES | | CHK S YODER 1/26/05 | | |
| TOLERANCES UNLESS OTHERWISE SPECIFIED: | | APVD S YODER 1/26/05 | NAME | |
| 0 PLC ± - 1 PLC ± - 2 PLC ± .02 3 PLC ± .010 4 PLC ± - ± 1' ANGLES ± 1' | | PRODUCT SPEC - | SSB7TGXX0502 | |
| MATERIAL - | | FINISH - | APPLICATION SPEC - | RESTRICTED TO - |
| | | WEIGHT - | SIZE A3 | CAGE CODE 00779 |
| | | CUSTOMER DRAWING | DRAWING NO C-3-796602-8 | |
| | | SCALE NTS | SHEET 1 OF 2 | REV A3 |

THIS DRAWING IS UNPUBLISHED. RELEASED FOR PUBLICATION
 © COPYRIGHT - BY TYCO ELECTRONICS CORPORATION. ALL RIGHTS RESERVED.

| | | | | | | | |
|-----|------|-----------|-----|-------------|------|-----|------|
| LOC | DIST | REVISIONS | | | | | |
| FT | 0 | P | LTR | DESCRIPTION | DATE | DWN | APVD |
| | | | - | SEE SHEET 1 | - | - | - |



3-1546969-0

| | | | | | |
|--------------|--------|--------|-------------|----------------|-------------|
| YES | 7.000 | 7.562 | 15 | SSB7TF15050213 | 3-1546969-0 |
| YES | 11.375 | 11.937 | 25 | SSB7TG250502 | 2-1546969-5 |
| YES | 10.937 | 11.500 | 24 | SSB7TG240502 | 2-1546969-4 |
| YES | 10.500 | 11.062 | 23 | SSB7TG230502 | 2-1546969-3 |
| YES | 10.062 | 10.625 | 22 | SSB7TG220502 | 2-1546969-2 |
| YES | 9.625 | 10.187 | 21 | SSB7TG210502 | 2-1546969-1 |
| SSB7 BUSHING | DIM B | DIM A | NO. OF POS. | CATALOG NUMBER | PART NUMBER |

| | | | | | | |
|--|--|------------------|-----------|---------------|---|--------------|
| THIS DRAWING IS A CONTROLLED DOCUMENT. | | DWN | S SCHLGEL | 1/26/05 | Tyco Electronics Corporation Harrisburg, Pa 17105-3608 | |
| DIMENSIONS: INCHES | | CHK | S YODER | 1/26/05 | | |
| | | APVD | S YODER | 1/26/05 | | |
| TOLERANCES UNLESS OTHERWISE SPECIFIED: | | PRODUCT SPEC | | NAME | | |
| 0 PLC ± - | | - | | SSB7TGXX0502 | | |
| 1 PLC ± - | | APPLICATION SPEC | | RESTRICTED TO | | |
| 2 PLC ± .02 | | - | | SIZE | CAGE CODE | DRAWING NO |
| 3 PLC ± .010 | | - | | A3 | 00779 | C-3-796602-8 |
| 4 PLC ± - | | WEIGHT | | - | | |
| ANGLES ± 1° | | CUSTOMER DRAWING | | SCALE | SHEET | REV |
| MATERIAL - | | - | | NTS | 2 OF 2 | A3 |
| FINISH - | | - | | | | |